



skatepark
design
and construction



YOUTH'S DREAMS COME TRUE



PROJECT

SK 43-17

PROJECT SK 43-17



LxWxH, mm

① **SKATEPLAZA WITH TRANSFER**
12340x8100x600/1500

② **FUNBOX**
6600x6160x500/900

③ **BANK**
5500x7320x1600

④ **MANUAL PAD**
7320x2300x300/600

⑤ **RAIL**
3000x300x250

⑥ **KICKER**
1450x1220x300



PROJECT SK 43-17

About project:

Project is directed for skateboarding for riders with beginner and medium level. The main elements of project is - Skateplaza with transfer (№1) and wide funbox(№2), which imitating city obstacles. Project also provide line elements for learning jumps and sliding basic tricks (№4-6). Also equipment can be used by rollerbladers and kickscooters.

Requirements for area: **asphalt/concrete**

Primary users:

skateboarding, rollerblading, kickscooter

Level: **beginners /medium**

The average numbers of riders: **14 people**

Minimum area size: **43x17 (731 m²)**

Warranty – 2 years.

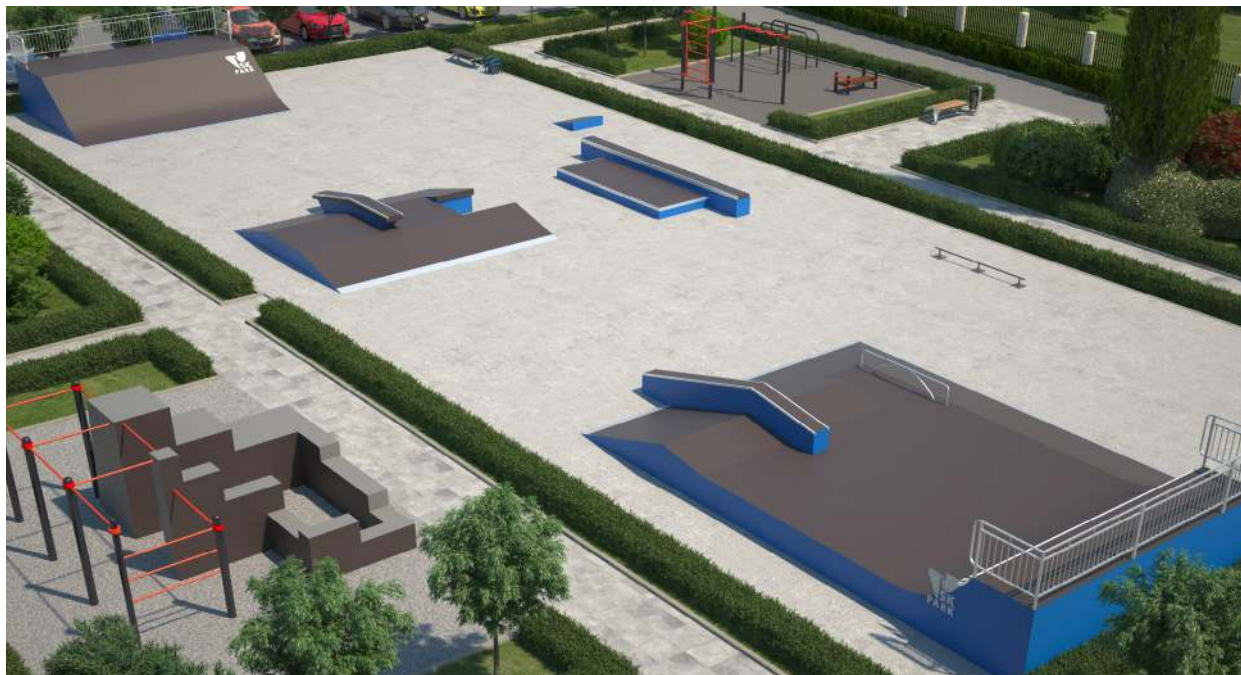
Equipment complies GOST 54415-2011(Russian standard).

Equipment complies DIN EN 14974(European standard).

More options:

- drawing a logo on the equipment
- colouring of a framework and side panels in any color by RAL

Price and terms you can specify with managers of SKpark company.





METAL FRAME

mobile version of equipment

PLEASE SPECIFY PRICE
AND TERMS WITH MANAGERS
OF SKPARK COMPANY

MATERIALS

material comparisons



- **Frame**

Steel module frame

- **Anti-corrosion**

Polymeric-powder coating
any color according by RAL

- **Surface**

Finnish laminated plywood
Thickness – from 12mm

- **Side panels (additional option)**

Finnish laminated plywood
Thickness – from 12mm
any color according by RAL

- **Fasteners** (rivets, screws)

Steel galvanized fasteners

ALL USED MATERIALS ARE CERTIFIED AND
HAVE CERTIFICATE OF CONFORMITY



WOODEN FRAME

stationary version of equipment*

PLEASE SPECIFY PRICE
AND TERMS WITH MANAGERS
OF SKPARK COMPANY

MATERIALS

material comparisons

- **Frame****

Smoothed and planed
Finnish laminated plywood

- **Surface**

Finnish laminated plywood
Thickness – from 12mm

- **Side panels**

Finnish laminated plywood
Thickness – from 12mm

- **Safety hand-rails**

Steel profile

- **Fasteners (rivets, screws)**

Steel galvanized fasteners

* Required installation specialists

** Processing by antiseptic and fire prevention solute.

ALL USED MATERIALS ARE CERTIFIED AND
HAVE CERTIFICATE OF CONFORMITY










WOOD VS METALL



WOODEN FRAME



STEEL FRAME

	WOODEN FRAME	STEEL FRAME
 DURABILITY	ABOUT 7 YEARS	ABOUT 15 YEARS
 WARRANTY	2 YEARS	2 YEARS
 NOISE LEVEL	Can be used at inhabited yard	It isn't recommended to use near houses.
 AVERAGE INSTALLATION TIME	Required installation specialists. Average installation time: 3-30 days.	Possibility of installation by yourself, according to the circuit assembly. Average installation time: 1-7 days.
 DISMANTLING	Fixed construction (practically unsuitable for dismantling).	Possible to disassemble and assemble the equipment if it necessary.



skatepark
design
and construction

119571, Moscow,
Leninsky prospect,
158, office 338

tel.:

+7 (495) 988-27-38
+7 (985) 820-62-25

MAIL@SKPARK.RU
WWW.SKPARK.RU

